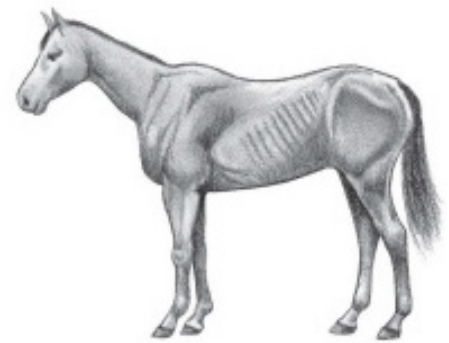


Areas of emphasis for body condition scoring: thickening of the neck, fat covering the withers, fat deposits along backbone, fat deposits on flanks, fat deposits on inner thighs, fat deposits around tailhead, fat deposits behind shoulders, fat covering ribs, shoulder blends into neck.

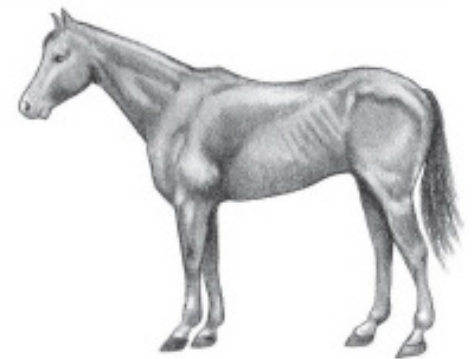
1 Poor

Animal extremely emaciated; spine, ribs, tailhead, points of hip and buttock projecting prominently; bone structure of withers, shoulders, and neck easily noticeable; no fatty tissue can be felt.



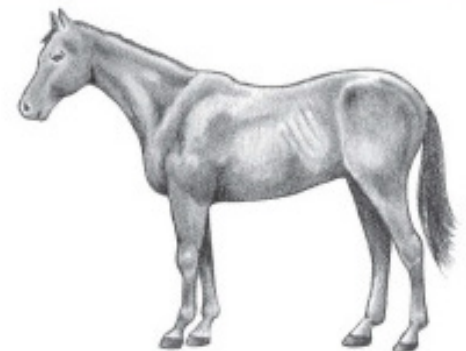
2 Very Thin

Animal emaciated; slight fat covering over base of spine, ribs, tailhead, points of hip and buttock prominent; withers, shoulders, and neck structure faintly discernible.



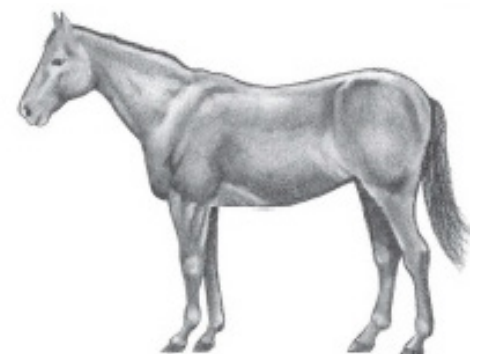
3 Thin

Fat buildup about halfway on spine, slight fat cover over ribs; spine and ribs easily discernible; tailhead prominent but individual vertebrae cannot be identified visually; points of hip appear rounded but easily discernible; points of buttock not distinguishable; withers, shoulders, and neck accentuated.



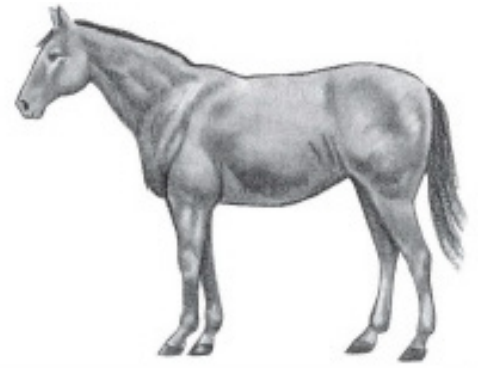
4 Moderately Thin

Slight ridge along back; faint outline of ribs discernible; tailhead prominence depends on conformation, fat can be felt around it; points of hip not discernible; withers, shoulders, and neck not obviously thin.



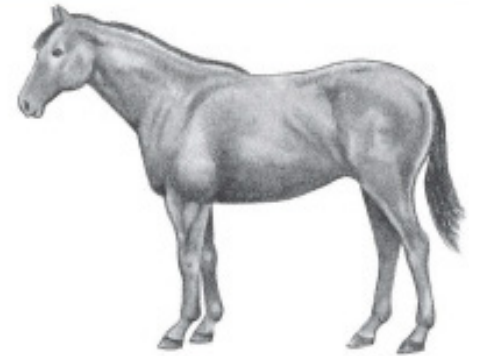
5 Moderate

Back is flat (no crease or ridge); ribs not visually distinguishable but easily felt; fat around tailhead beginning to feel spongy; withers appear rounded over spine; shoulders and neck blend smoothly into body.



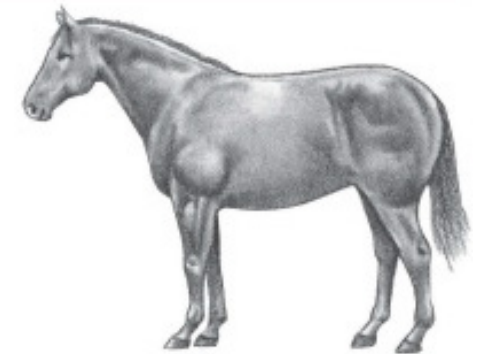
6 Moderately Fleshy

May have slight crease down back; fat over ribs fleshy/spongy; fat around tailhead soft; fat beginning to be deposited along sides of withers, behind shoulders, and along side of neck.



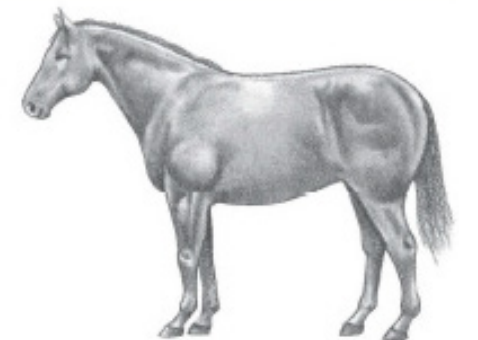
7 Fleshy

May have crease down back; individual ribs can be felt; but no noticeable filling between ribs with fat; fat around tailhead soft; fat deposited along withers, behind shoulders, and along neck.



8 Fat

Crease down back, difficult to feel ribs; fat around tailhead very soft; area along withers filled with fat; area behind shoulders filled with fat; noticeable thickening of neck; fat deposited along inner thighs.



9 Extremely Fat

Obvious crease down back; patchy fat appearing.



Kentucky Equine Research

3910 Delaney Ferry Road, Versailles, KY 40383
+1 856-873-1988 | ker.com | info@ker.com

World Leaders In Equine Nutrition ©Kentucky Equine Research 2020

Adapted from Henneke and coworkers at Texas A&M University and published in 1983 by the Equine Veterinary Journal.